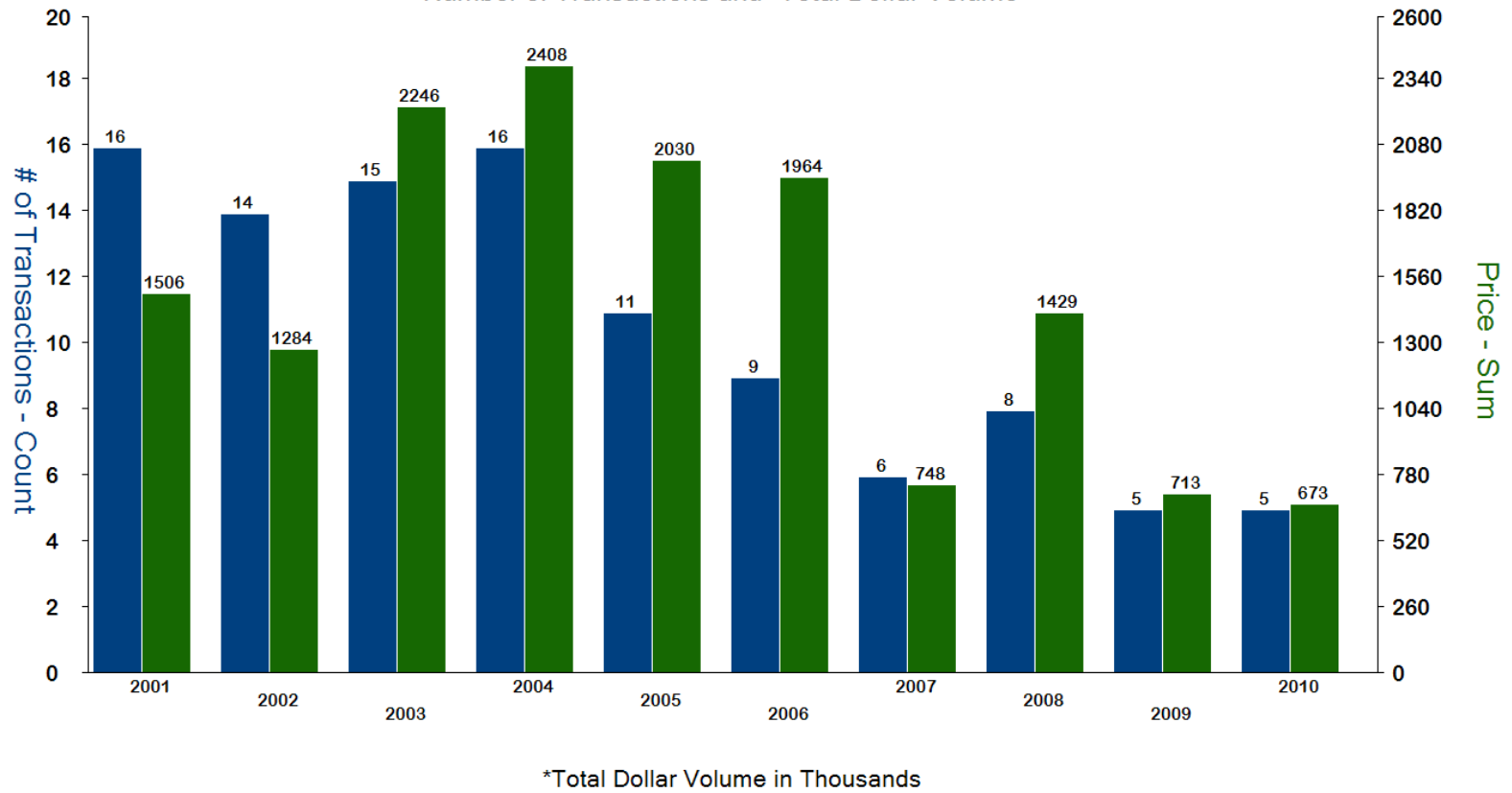
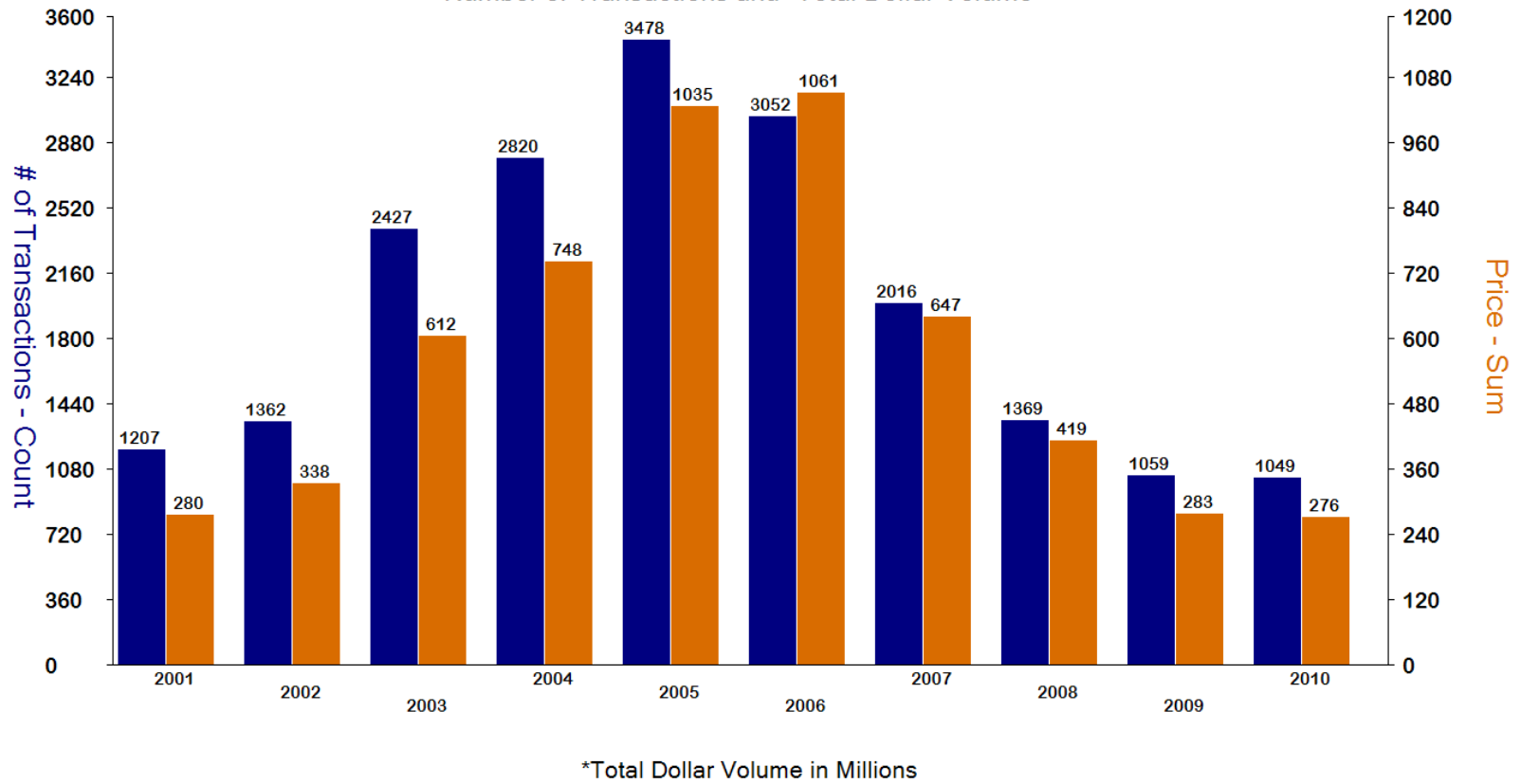


# St. Johns County Townhome Resales

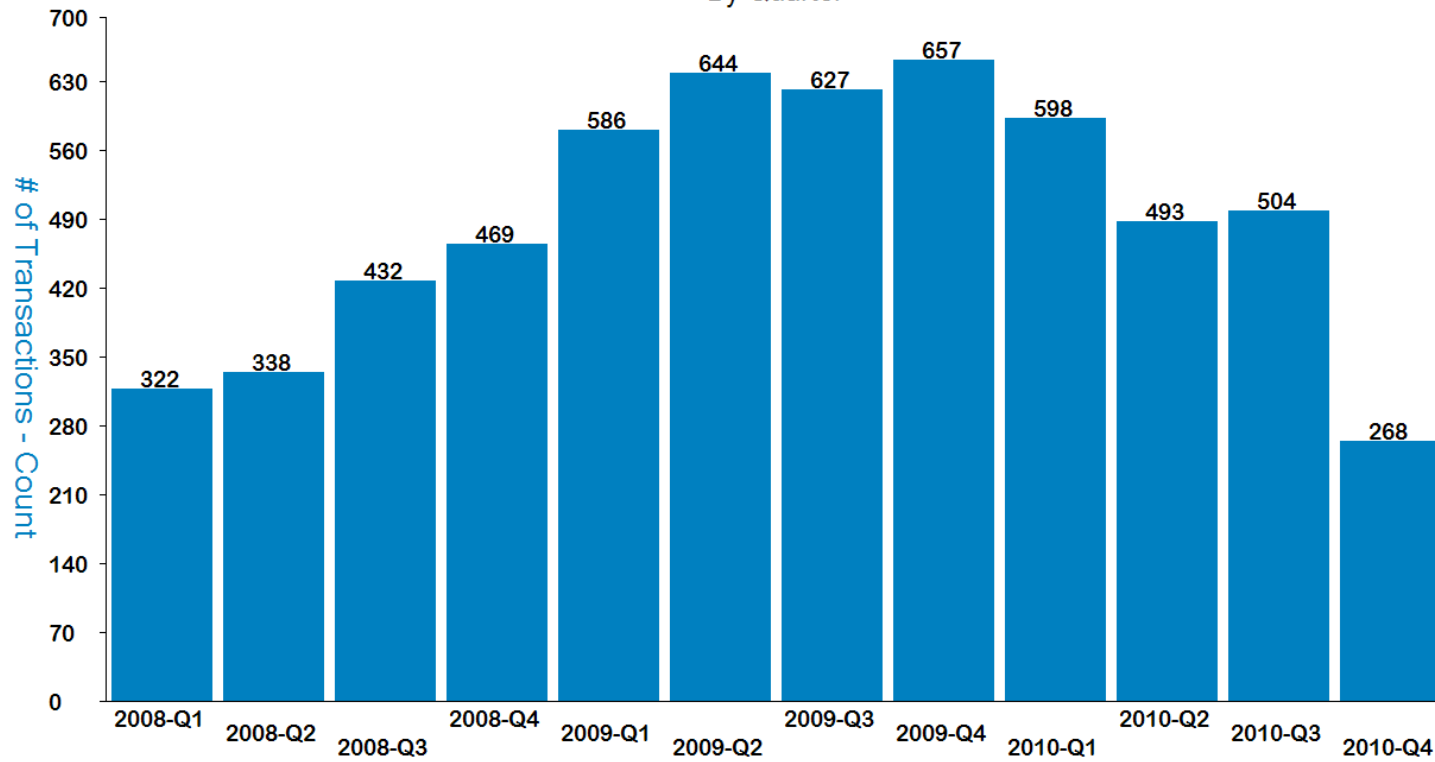
## Number of Transactions and \*Total Dollar Volume



### St. Johns County Single Family Detached Home NEW Sales Number of Transactions and \*Total Dollar Volume

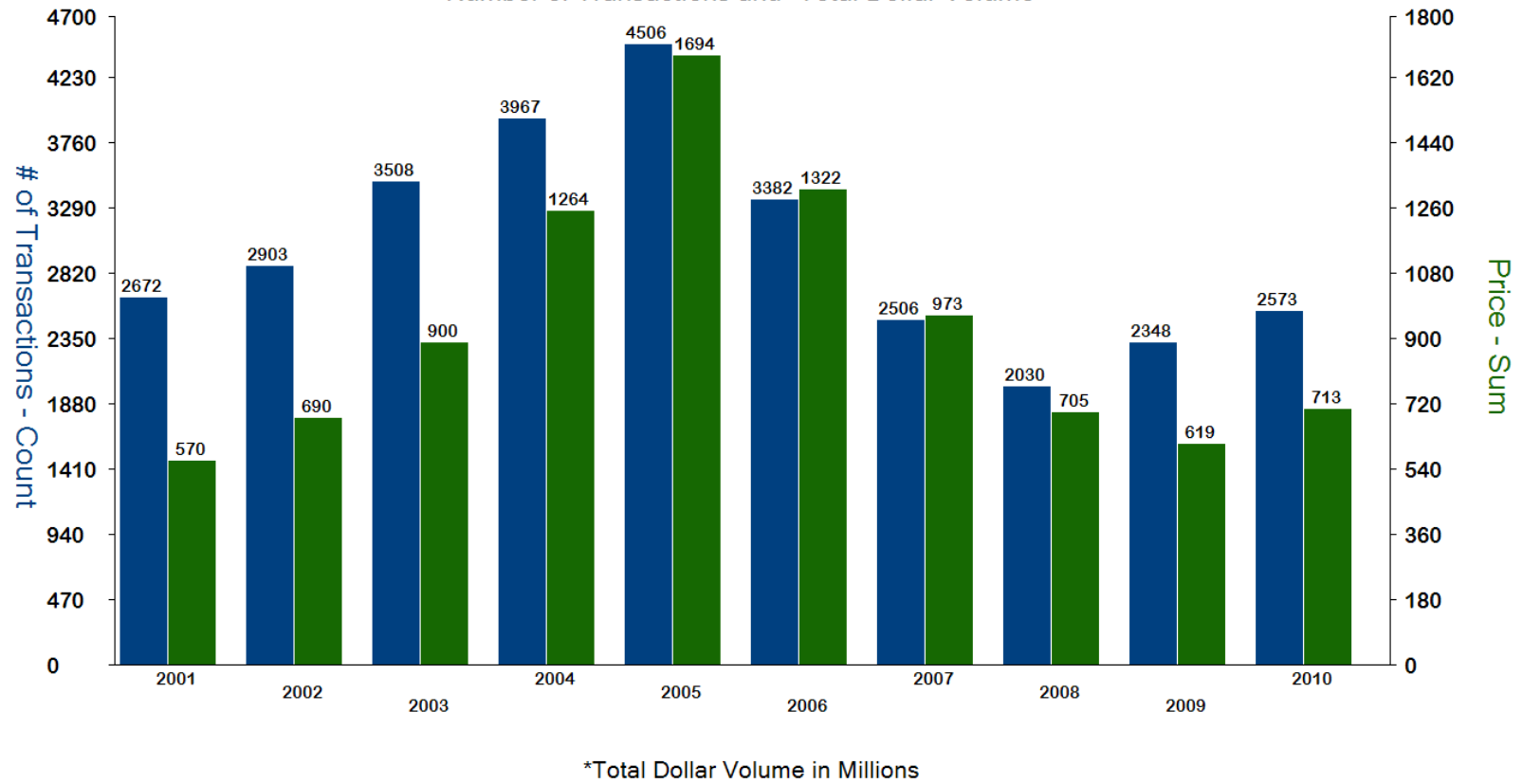


St. Johns County  
Residential\* Lis Pendens Filed  
By Quarter



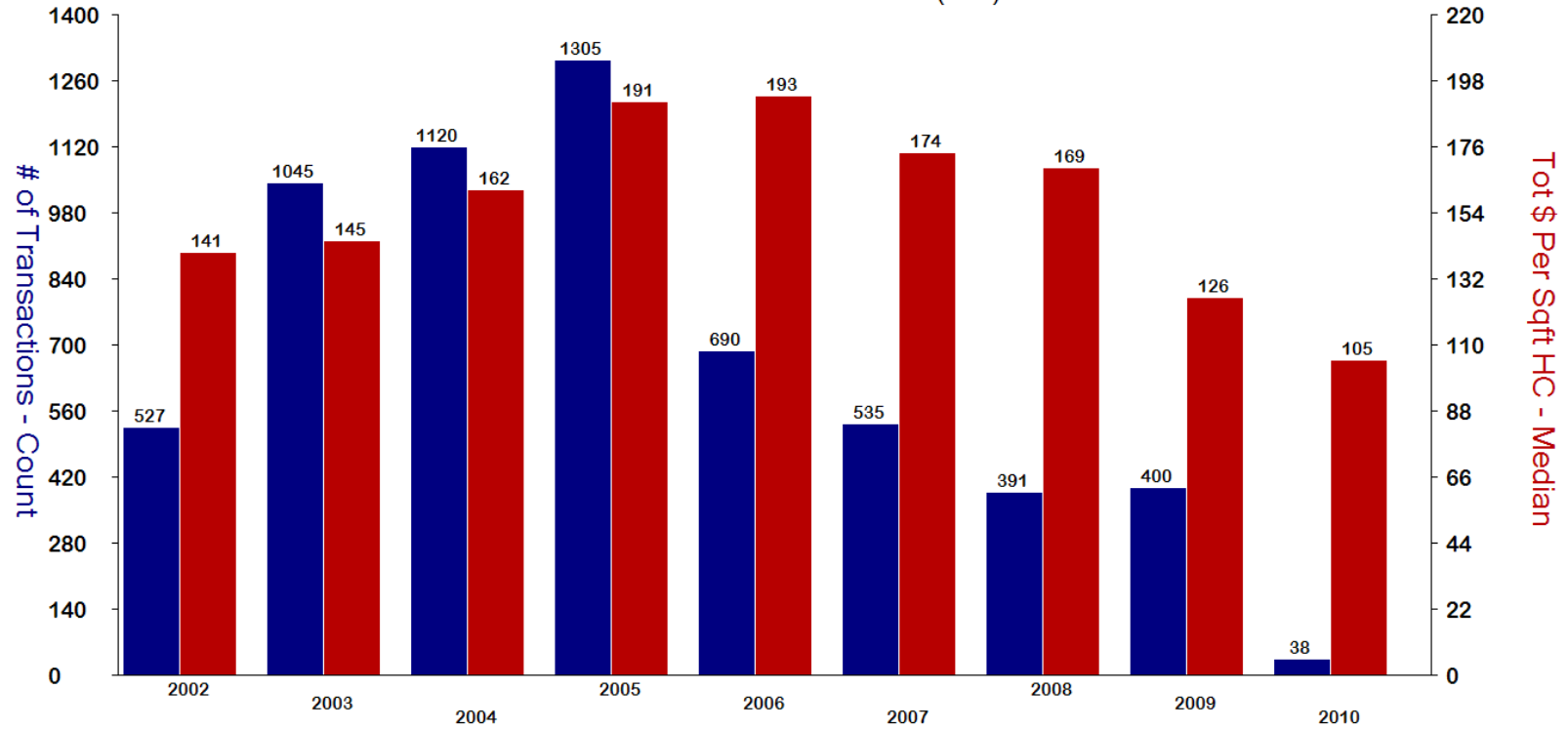
\*Includes Single Family, Condos, and Townhomes.

### St. Johns County Single Family Detached Home Resales Number of Transactions and \*Total Dollar Volume



# St. Johns County Condo Resales

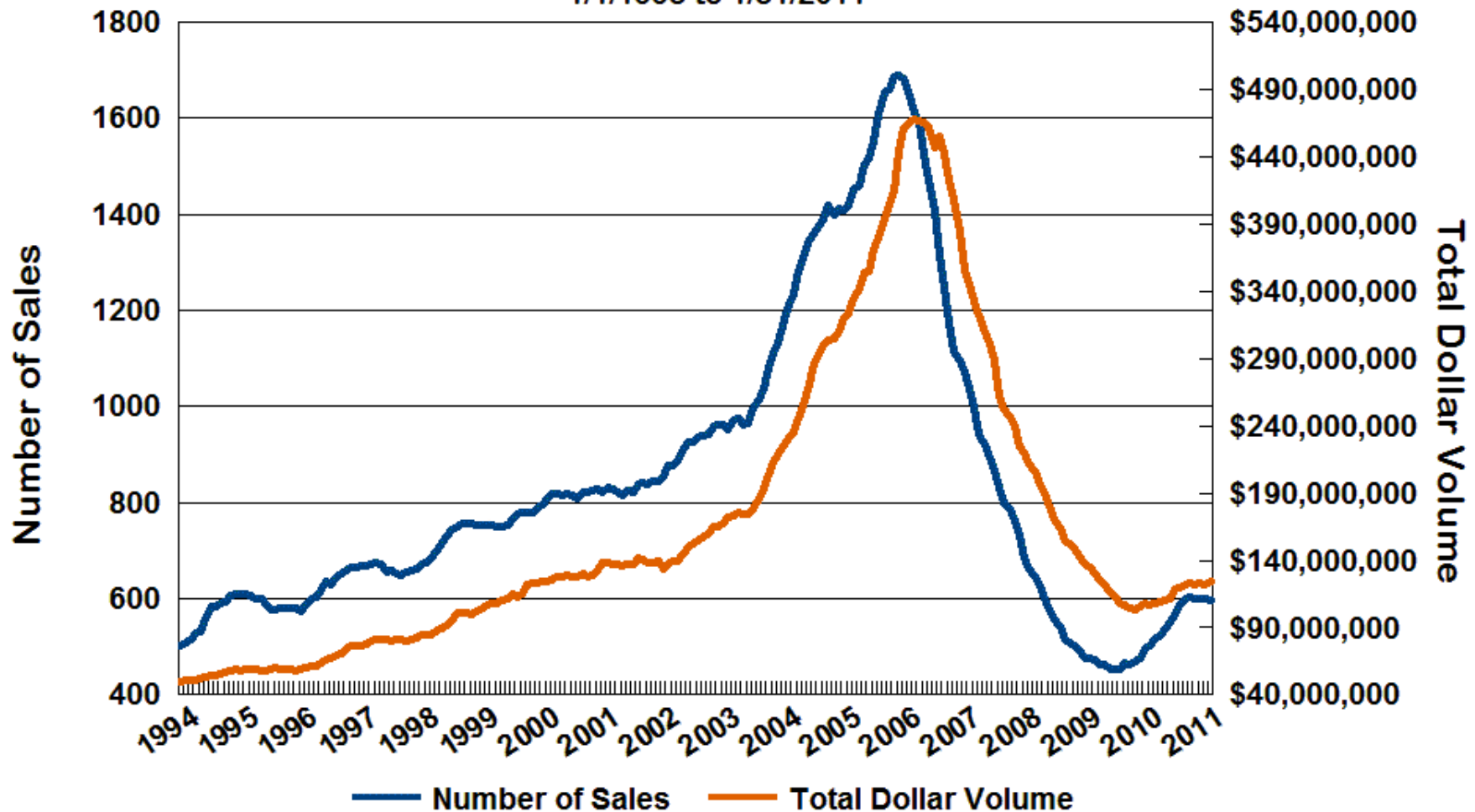
## Number of Transactions and Median PPSF (H/C) Per Year



# St. Johns County

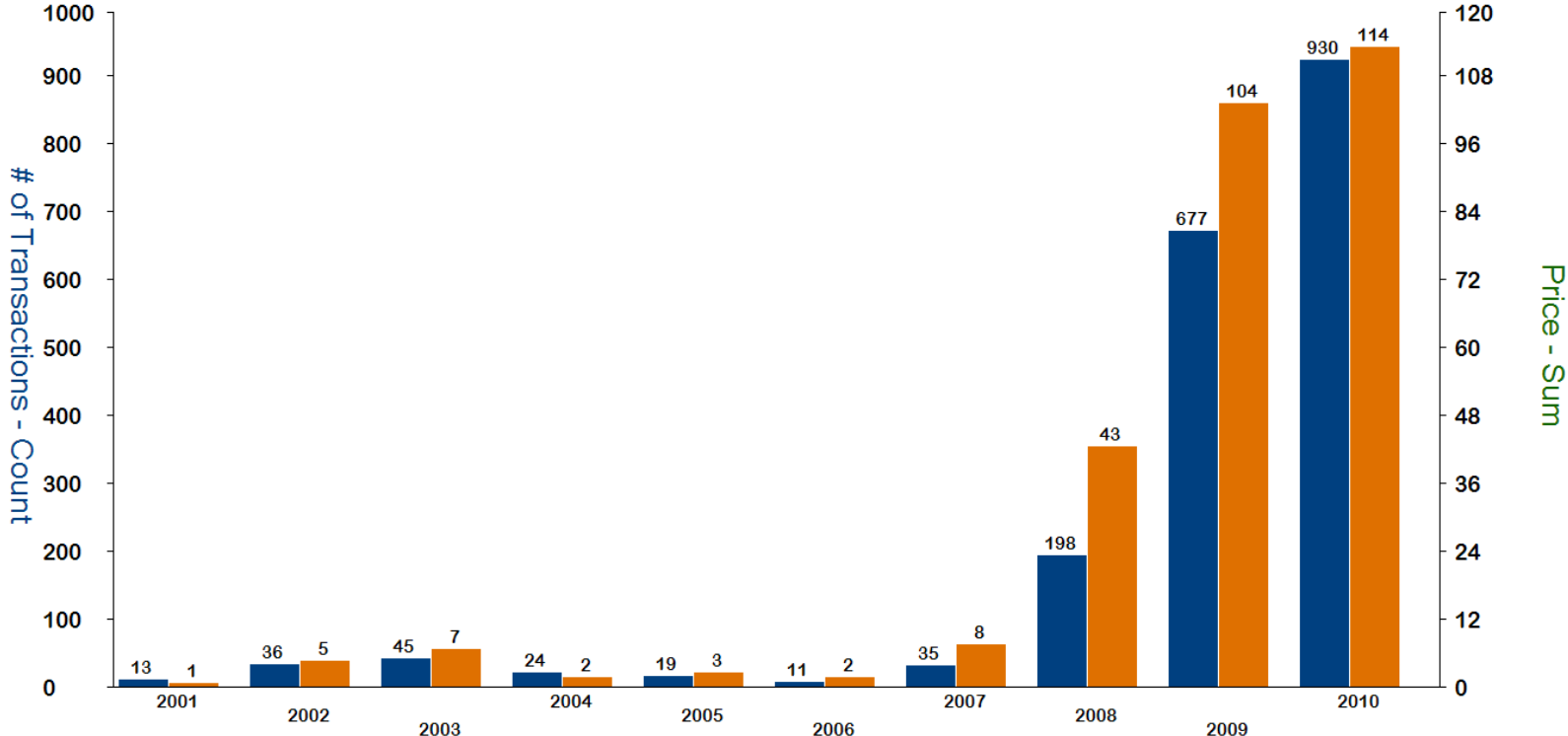
## Total Number and Dollar Volume of \*Real Estate Transactions

12 Month Moving Average  
1/1/1993 to 1/31/2011



\*Includes New and Resale Single Family, Condo, and Townhomes along with Mobile Homes, Vacant Residential and Commercial Lots, Improved Commercial, and Vacant Land.

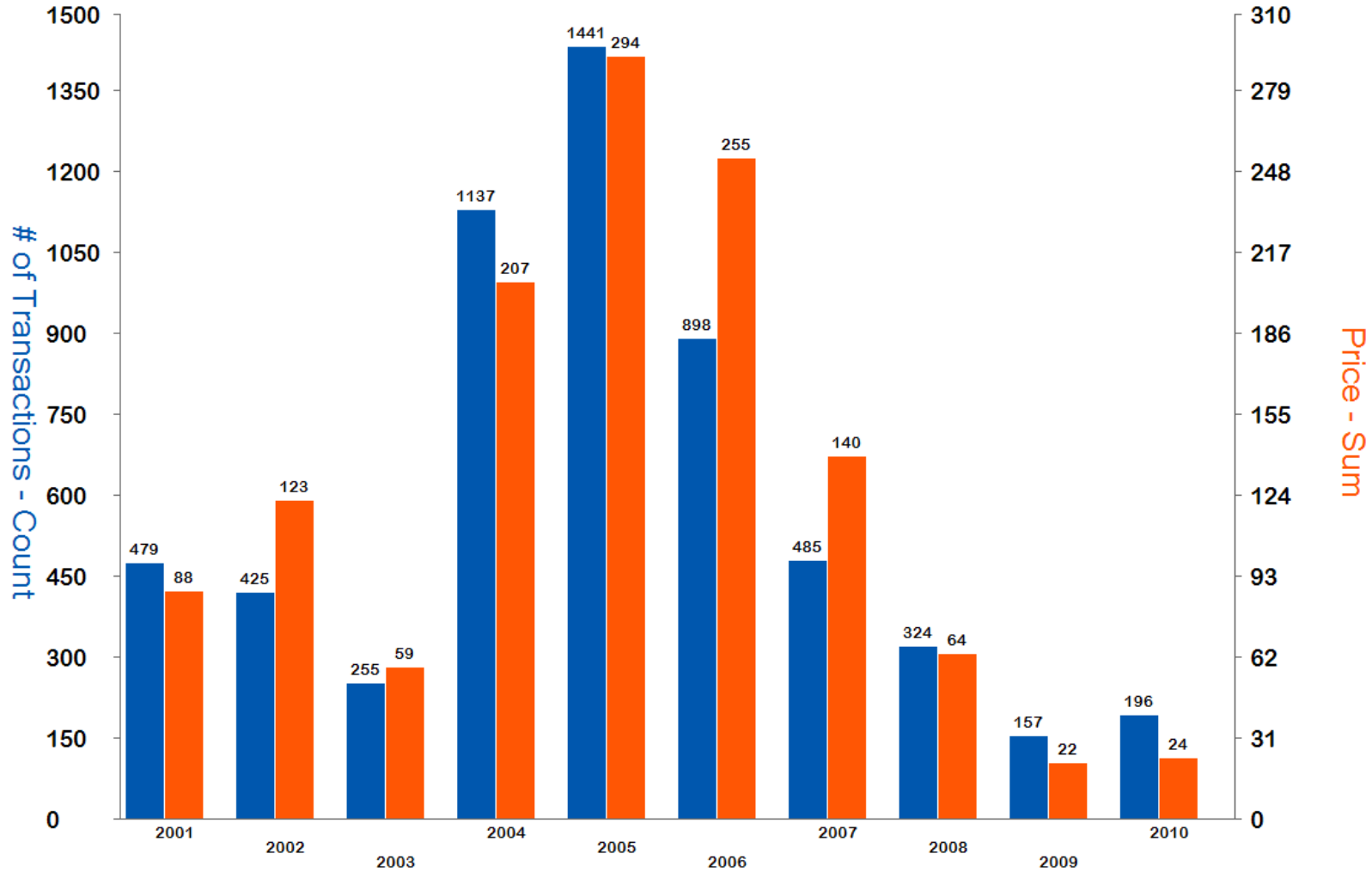
St. Johns County  
 Residential\* REO Sales  
 Number of Transactions and \*\*Total Dollar Volume



\*Residential includes Single Family, Condos, and Townhomes    \*\*Total Dollar Volume in Millions

# St. Johns County Condominium NEW Sales

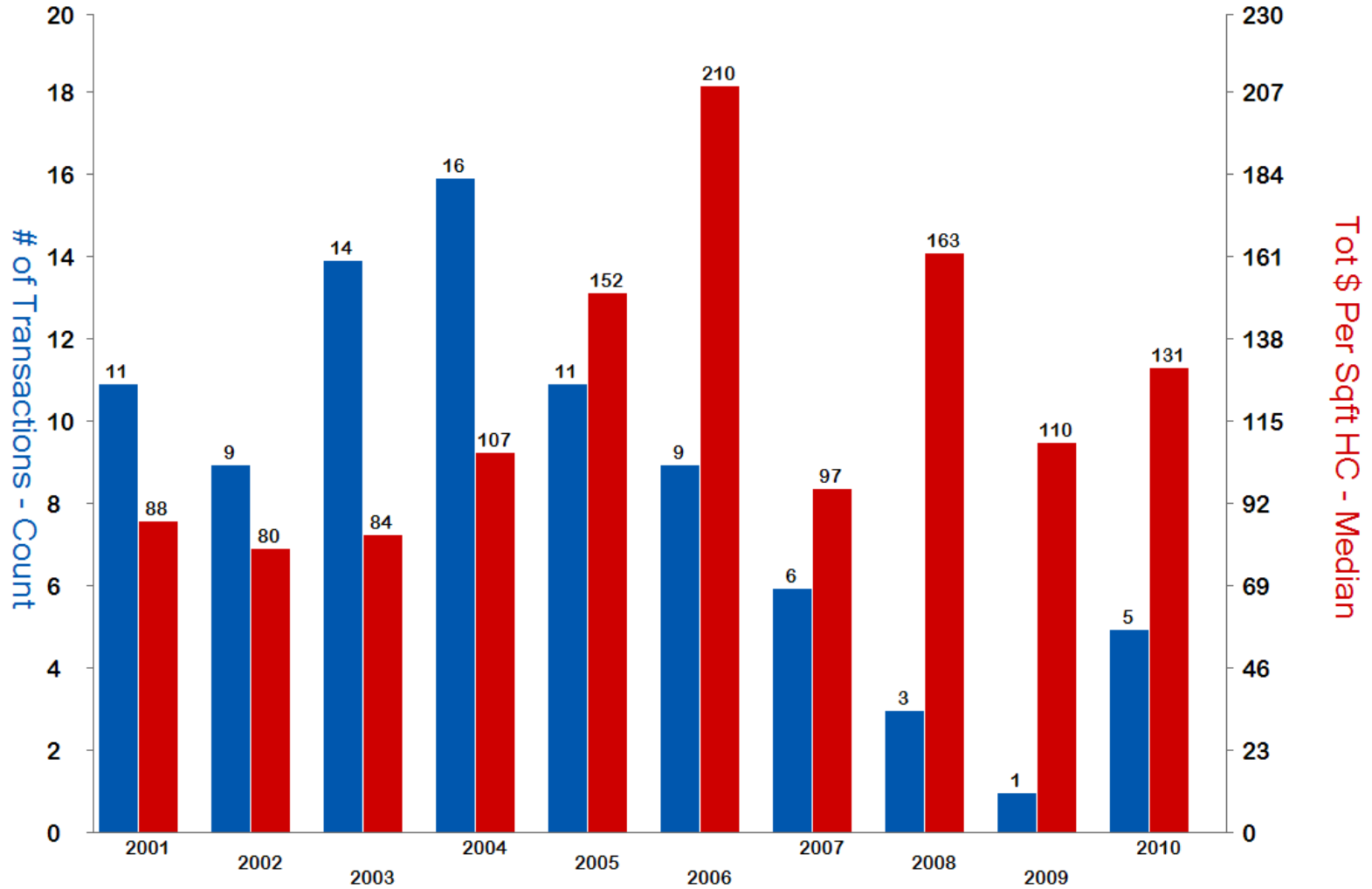
Number of Transactions and \*Total Dollar Volume



\*Total Dollar Volume in Millions

# St. Johns County Townhome Resales

Number of Transactions and Median PPSF (H/C) Per Year



### St. Johns County Condominium Resales Number of Transactions and \*Total Dollar Volume

